

The logo for ISM, consisting of the letters 'ISM' in a bold, black, sans-serif font.The text 'Executive MBA' in a black, sans-serif font, positioned to the right of the ISM logo.Three large, overlapping blue chevrons pointing to the right, set against a dark blue background. The chevrons are arranged in a staggered, overlapping pattern, creating a sense of forward motion.

# Executive MBA

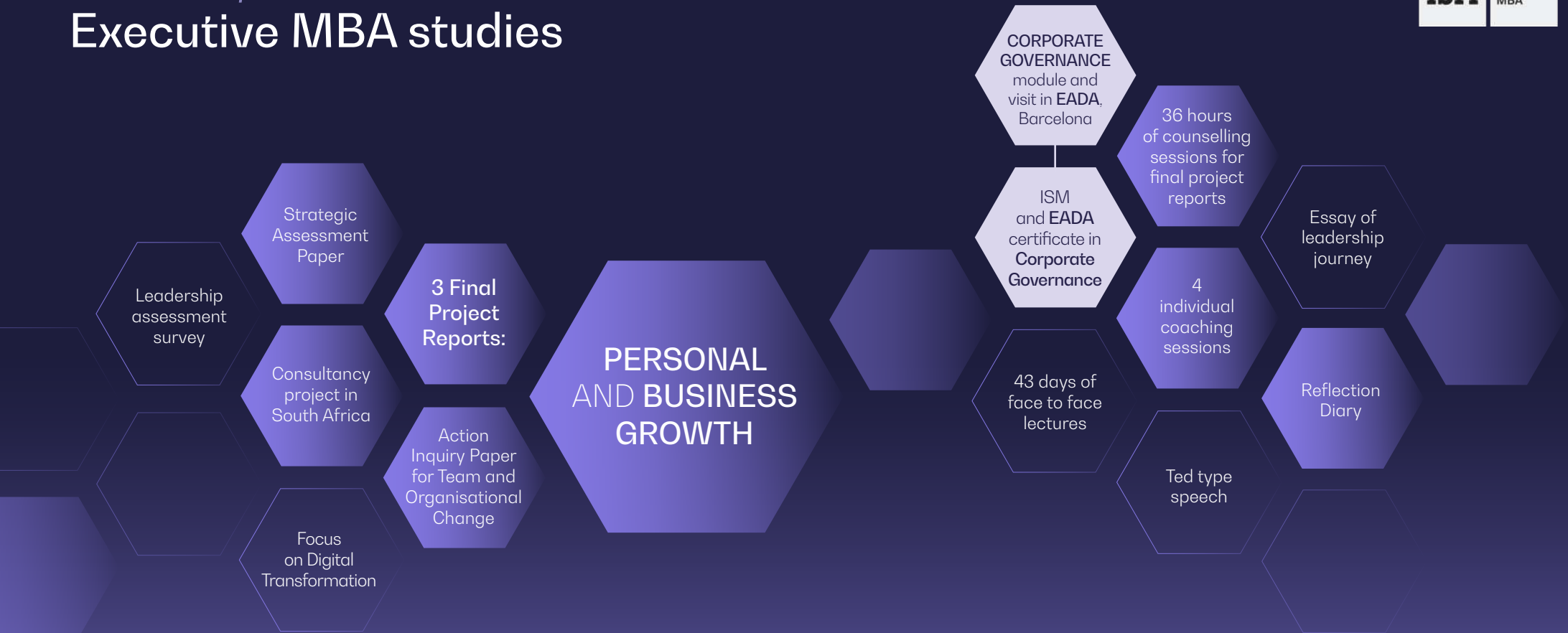


“The Executive MBA studies is the *perfect time* to step back and focus on the internal development and organizational transformation.”



Assoc. Prof. Dr.  
Audronė Nakrošienė  
Director of ISM Executive MBA

# The *uniqueness* of the Executive MBA studies



# 12 months of *transformational studies*

Certificate:  
ISM x EADA  
Corporate  
Governance

Diploma:  
Master's Degree  
(Executive MBA)

Lectures:  
Once per month  
on Thursdays,  
Fridays,  
Saturdays

Study  
duration:  
12 months

Study  
language:  
English





## Our *Students*

40<sup>years</sup>

Average student age

12<sup>years</sup>

Average top executive experience

30<sup>students</sup>

Carefully selected group



### Paulius Insoda

"NFQ Technologies" CEO

"I always raise the bar high, both for myself and for those around me. The year at ISM Executive MBA was not the easiest journey, if you aim for the maximum, you have to be prepared for everything. But in hindsight, if I were given the choice, I wouldn't change a thing. Every obstacle, challenge and struggle, every push outside the comfort zone, every experience has nurtured and opened up new possibilities. And I will certainly never be the same again."

ISM

Executive  
MBA

## What to aim for when you have *achieved everything*?

This work of art tells the story of a change in an executive's life during his ISM Executive MBA. The executive becomes an explorer and ventures into unexplored spaces both in business and in his/hers personality.



# 90%

of our lectures are from  
*world leading* business  
schools



Assoc. Prof.  
Dr. Audronė  
Nakrošienė

Director of ISM Executive MBA studies



Assoc. Prof.  
Dr. Peter Moran

London Business School, CEIBS Shanghai,  
UNSW Australia Business School



Dr. Peter  
Crow

Chair, Riverlock Group Holdings Limited and  
subsidiaries; Director Cotas Limited; Director,  
Quarry Group Limited



Prof. Dr. John  
Antonakis

HEC Lausanne



Dado Van  
Peteghem

Founding partner at the consulting firm  
Duval Union Consulting, co-founder of  
Social Seeder and Speakers Base



Prof. Dr. Bodo B.  
Schlegelmilch

WU Vienna University



Prof. Dr. Jean-  
Philippe Bonardi

HEC Lausanne



Dr. Alan  
Matcham

London Business School, Saïd Business  
School, University of Oxford, University  
of Cambridge



Dr. Yago de la  
Cierva

IESE Business School



Prof. Dr.  
Antonino  
Vaccaro

IESE Business School



Dr. Kandarp  
Mehta

IESE Business School



Dr. Dave  
Tullett

Saïd Business School, The University  
of Oxford



Farid  
Singh

INSEAD Business School



Saher  
Sidhom

CEO at HACKMASTERS



Prof. Dr. Takis  
Damaskopoulos

European Institute of Interdisciplinary  
Research (EIR)



Prof. Dr.  
Massimo  
Maoret

IESE Business School



Murray  
Steele

Programme Director for NED Training  
Programmes for the Financial Times



Assoc. Prof. Dr.  
Dalius Misiūnas

ISM University of Management and  
Economics, Chairman of the Board of Auga  
Group

# EMBA *diploma + certificate* in Corporate Governance

After completing one year long studies, you will receive:

➤ a Master's diploma  
(Executive MBA)

➤ ISM x EADA certificate  
in Corporate Governance



**Šarūnas Putrius**

“Telesoftas” CEO

“Being an effective manager is closely tied to continuous learning throughout one's life. The ISM Executive MBA provides an excellent opportunity to enhance your understanding of business management, strategy, and innovation. Moreover, it serves as a valuable tool for gaining deeper insights into your own leadership abilities.”





# Consultancy project in *South Africa* instead of Master's Thesis

In this ultimate business challenge, you will learn about cross-cultural challenges, investigate how to develop innovations in a new context, and understand your leadership style and personal skills even better.



**Rūta Bagdonavičienė**

"Limedika" CEO

"I am immensely proud of the personal and professional growth I have achieved through the ISM Executive MBA. This year-long journey has expanded my business network, boosted my confidence, and deepened my understanding of strategic challenges and leadership. I have become a more effective manager and a better version of myself."



# Core subjects

## **NEW!** The Corporate Governance

### Objectives:

In partnership with the highly acknowledged EADA Business School in Barcelona, this new course seeks to equip CEOs, board members and executives with the solid framework of corporate governance.

### What you will learn:

Lectures and case studies prepared by the leading business schools – Harvard, INSEAD, and IMD combine the key principles of corporate governance, compares governance models across different regions, and explores the intersection of ethics, leadership, and social responsibility in governance. In addition, the simulation exercise invites to critically analyze what factors affect the board-CEO relationship, what control systems can boards use to ensure the CEO is appropriately focused, or what role can/should the board play to ensure goals are achieved.

### Outcomes:

Participants will acquire a Corporate Governance Certificate (15 ECTS credits) issued by ISM and EADA, signifying their status as certified experts in the field and opening up career opportunities to become board members.



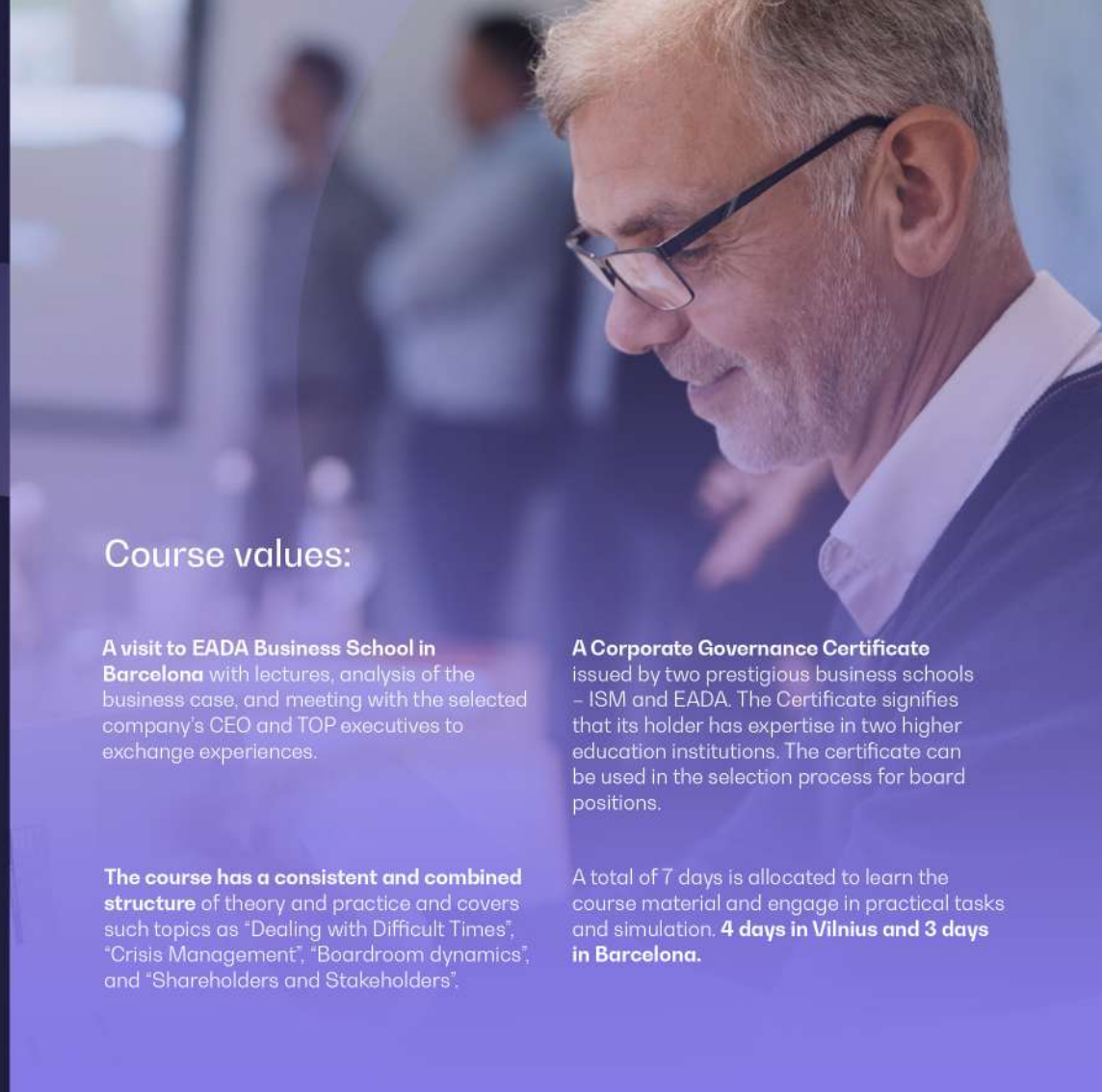
## Course values:

**A visit to EADA Business School in Barcelona** with lectures, analysis of the business case, and meeting with the selected company's CEO and TOP executives to exchange experiences.

**The course has a consistent and combined structure** of theory and practice and covers such topics as "Dealing with Difficult Times", "Crisis Management", "Boardroom dynamics", and "Shareholders and Stakeholders".

**A Corporate Governance Certificate** issued by two prestigious business schools – ISM and EADA. The Certificate signifies that its holder has expertise in two higher education institutions. The certificate can be used in the selection process for board positions.

A total of 7 days is allocated to learn the course material and engage in practical tasks and simulation, **4 days in Vilnius and 3 days in Barcelona.**



eada<sup>®</sup>

business school  
barcelona

EADA Business  
School is one  
of the top  
universities in  
Barcelona, Spain

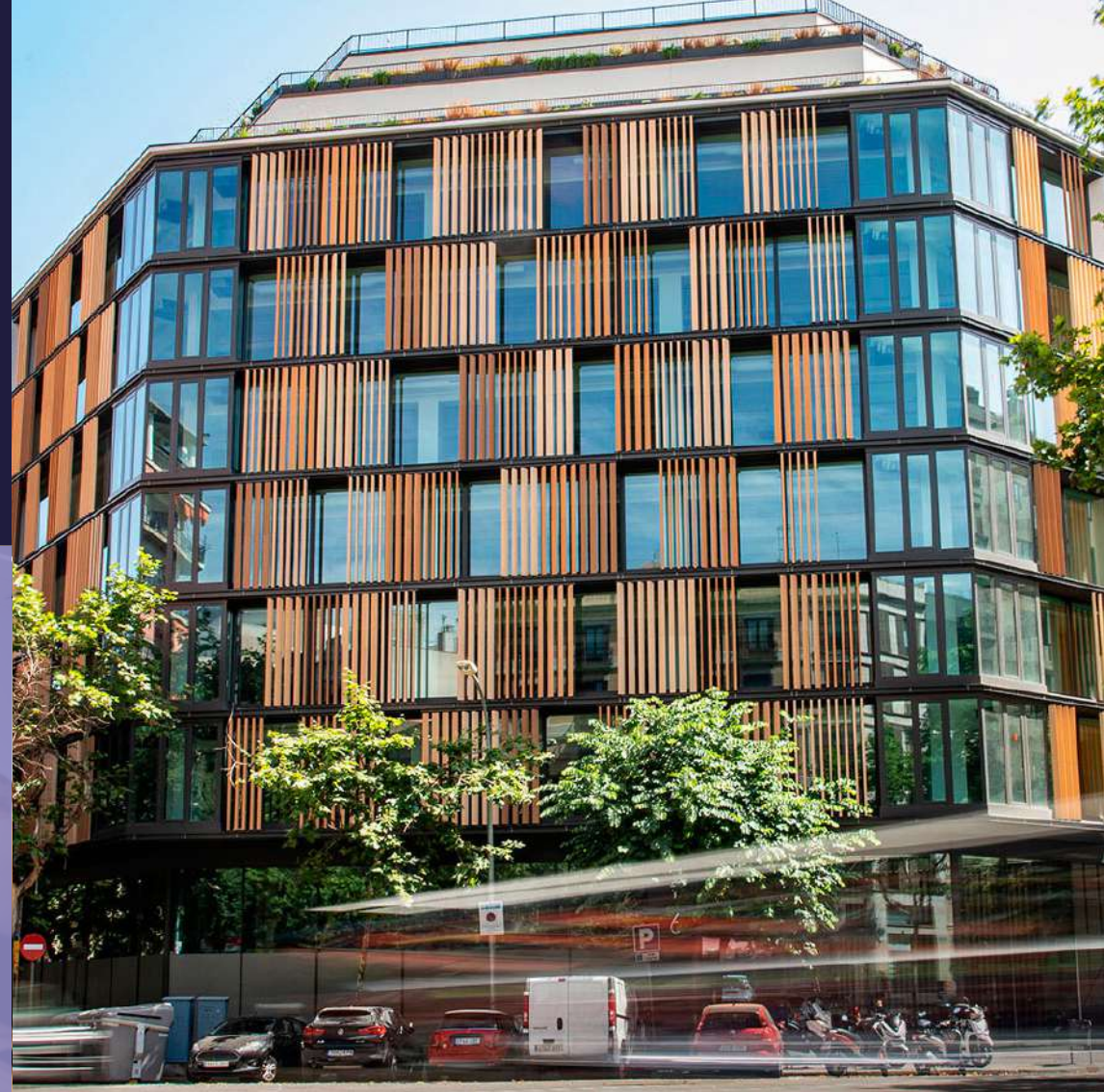
Enhance your  
skills and  
knowledge with  
a three-day  
**study course**  
in the heart of  
**Barcelona**

TOP  
**25**

**IN THE WORLD**

in the combined ranking<sup>1</sup>

EXECUTIVE EDUCATION  
2023 RANKING



# Core subjects

## Strategy

### Objectives:

The module provides an opportunity to understand strategy and develop strategic thinking.

### What you will learn:

Lectures include business case studies with international lecturers, and small teams of managers work on a Strategy Assessment Project for a selected organisation.

The aim is to develop the ability to make interdisciplinary business decisions in order to successfully implement the organisation's vision, mission and goals, using strategic management principles.

### Outcomes:

A Strategic Assessment of your chosen organisation is developed within the management team.



## Giedrius Valainis

"Aros Marine" CEO

"During my studies, I had a unique possibility to measure my leadership effectiveness, the greatest value of which, in my opinion, is to be able to evaluate oneself and to be evaluated by those around me (employees, friends, colleagues...). The findings are phenomenal! The information obtained helps me to build a picture of myself, to see my strengths and weaknesses and to create a plan for improvement."



## Leadership

### Objectives:

To prepare for leadership roles, both nationally and internationally, and in particular to be able to lead in a multi-stakeholder environment. This module is designed to elicit and help bring about tangible changes in the participants' behaviour and perceptions of leadership.

### What you will learn:

The Leadership module is based on self-reflection and feedback. We use a variety of non-traditional learning methods in the module, such as personal leadership research and personal coaching sessions, feedback from your study mates, a leadership reflection journal and the resulting TEDx-like speech. These will help you get to know yourself better

as a leader, develop your competences, gain confidence and learn how to lead your organisation more effectively. In this module we aim to create a unique environment that encourages you to share your personal experiences, learning to give and receive feedback from other managers at the same level, which is still quite rare in a normal business environment. A group of executives learning together for a whole year become not only students but also teachers of each other, which many describe as an invaluable experience.

### Outcomes:

A leadership project for your organisation.



## Milda Ivanauskienė

“MO Museum” CEO

“Inviting other managers into your organisation comes with a lot of responsibility - your ability to trust the team, disclose data to them and present the organisation objectively determines the outcome for the whole group. Peers help you to see the organisation from the side and explore it in an open-minded way. The experience has been unique and has helped me to discover new ways of moving forward.”



## Leading change and innovations

### Objectives:

Instead of a final Master’s thesis, an international consultancy project is carried out in South Africa in order to test one’s leadership internationally and to apply the knowledge acquired in the study programme.

### What you will learn:

Participants have the opportunity to take part in a real business consultancy project in Johannesburg and Cape Town (South Africa). During the visit, students work in

teams in different organisations. They identify key challenges and develop a change plan for the management team.

In this module we aim to create a unique environment that encourages you to share your personal experiences, give and receive feedback from other managers. Executives become not only students but also teachers for each other, which many describe as an invaluable experience.

### Outcomes:

Preparation and presentation of a strategic change plan to the management or board of an organisation operating in SAR.

# Why *choose* the ISM Executive MBA?



**Strong academic partners** from leading universities



**World Class Faculty**



**Real case analysis.**  
Possibility to analyze your own company



Platform for **networking**



**Flexible schedule.**  
Classes once per month on Thursdays, Fridays and Saturdays



**Participation in a consultancy project** in Johannesburg and Cape Town, South Africa

**NEW!**



**Corporate governance course** with a 3-day visit to EADA in Barcelona + **ISM x EADA Corporate Governance certificate**





# ISM Executive MBA *Alumni Club*

Connect with other executives and continue your learning journey even after your studies!

Over 180  
Alumni

Annual EMBA  
GALA Dinner

Private networking  
and other events



**Andrius Kurganovas**

"Biržų duona" CEO

"The ISM Executive MBA represents more than just a diploma; it embodies our responsibility as leaders of organizations to actively contribute to a brighter and more prosperous future for Lithuania."

# Entry requirements

Bachelor's Degree

English Fluency

5 years of Managerial Experience



**Algirdas Ramaška**

"Kino Pavasaris" CEO

"During my ISM Executive MBA, collaborating with fellow students on a strategic paper for my organization was incredibly valuable. Their expertise and insights, coupled with the opportunity to delve into the finest details, and be evaluated by external experts, enriched the experience."

# Contact us for a consultation:



**Assoc. Prof. Dr. Audronė Nakrošienė**  
Director of ISM Executive MBA  
+370 682 50535  
audrone.nakrosiene@ism.lt



**Indrė Mertinienė**  
Executive Education Consultant  
+370 682 16439  
indre.mertiniene@ism.lt

Education is not just a process of acquiring knowledge, but a journey of self-discovery and personal growth. So why not join us and embark on this exciting adventure of learning?



